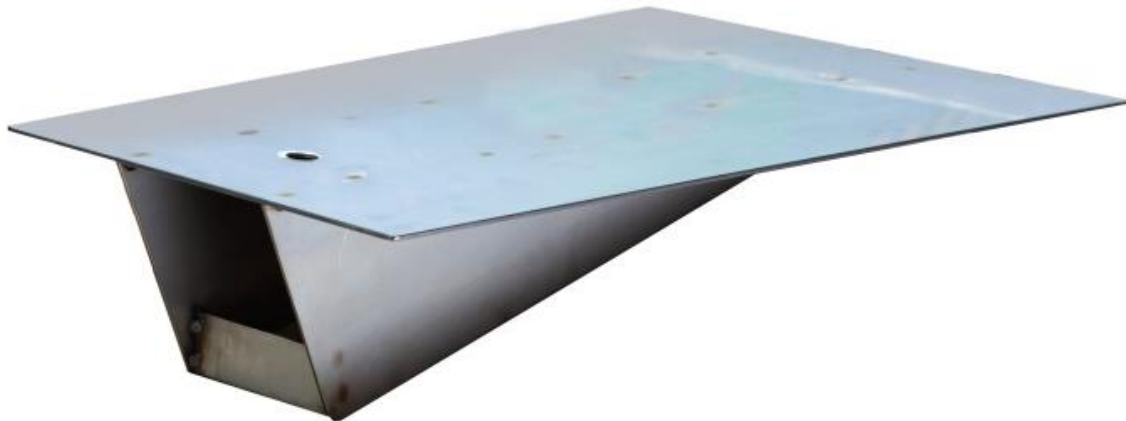
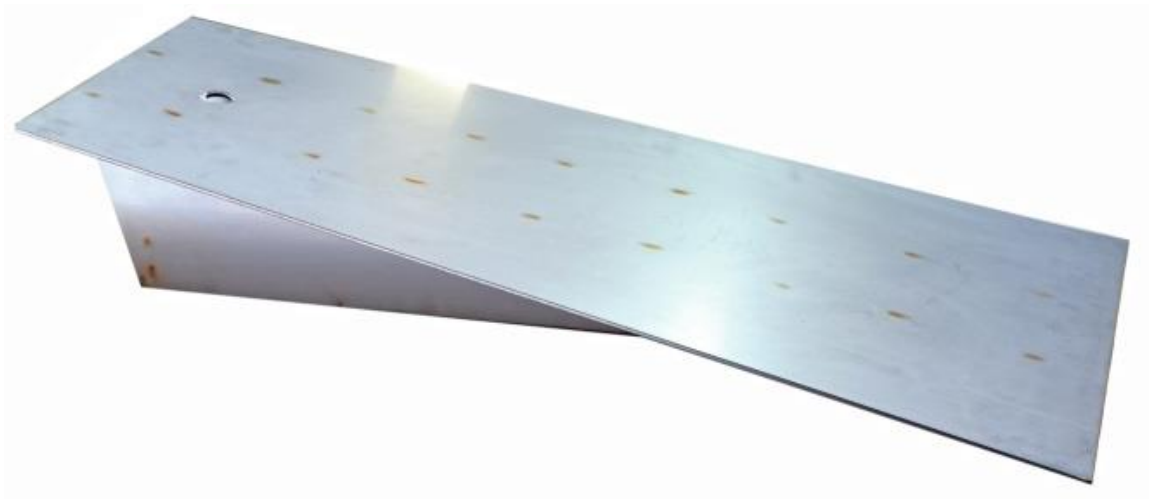


TECHNICAL SPECIFICATION / INSTRUCTION MANUAL

Stainless steel lid flush mount for pole vault box PVLID-S

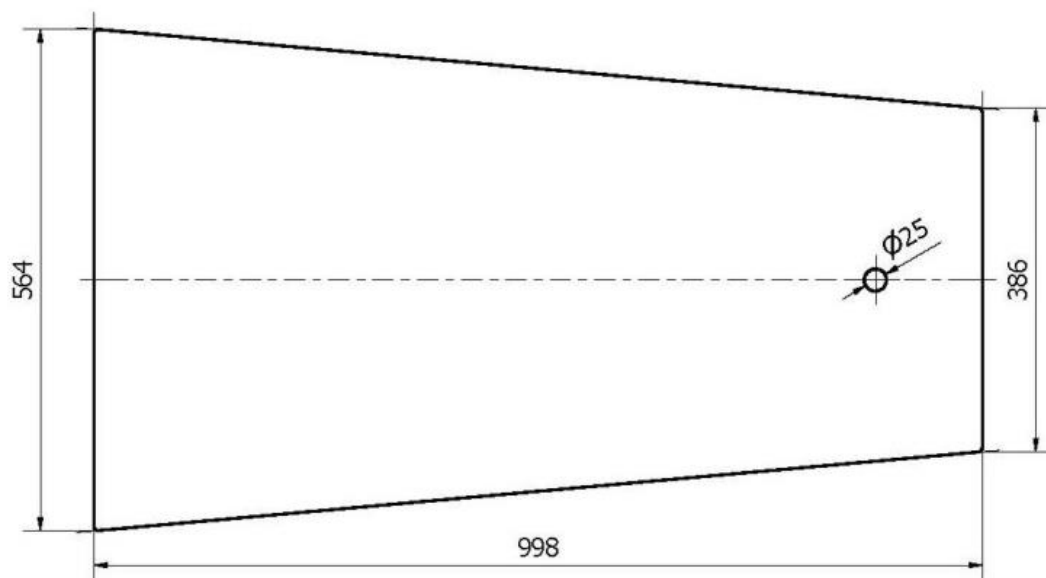
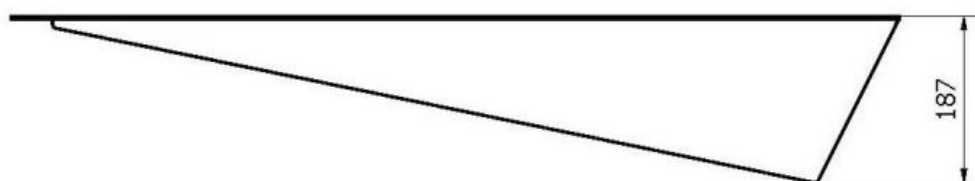
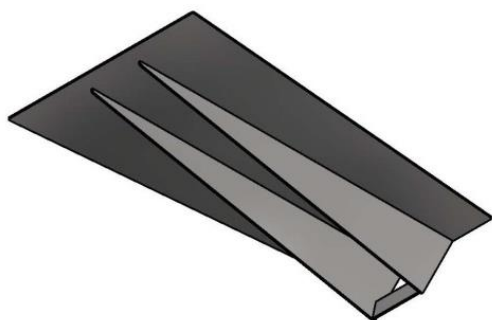
I. Use

The lid is used to blank and protect the inside of the PV box during idle periods.



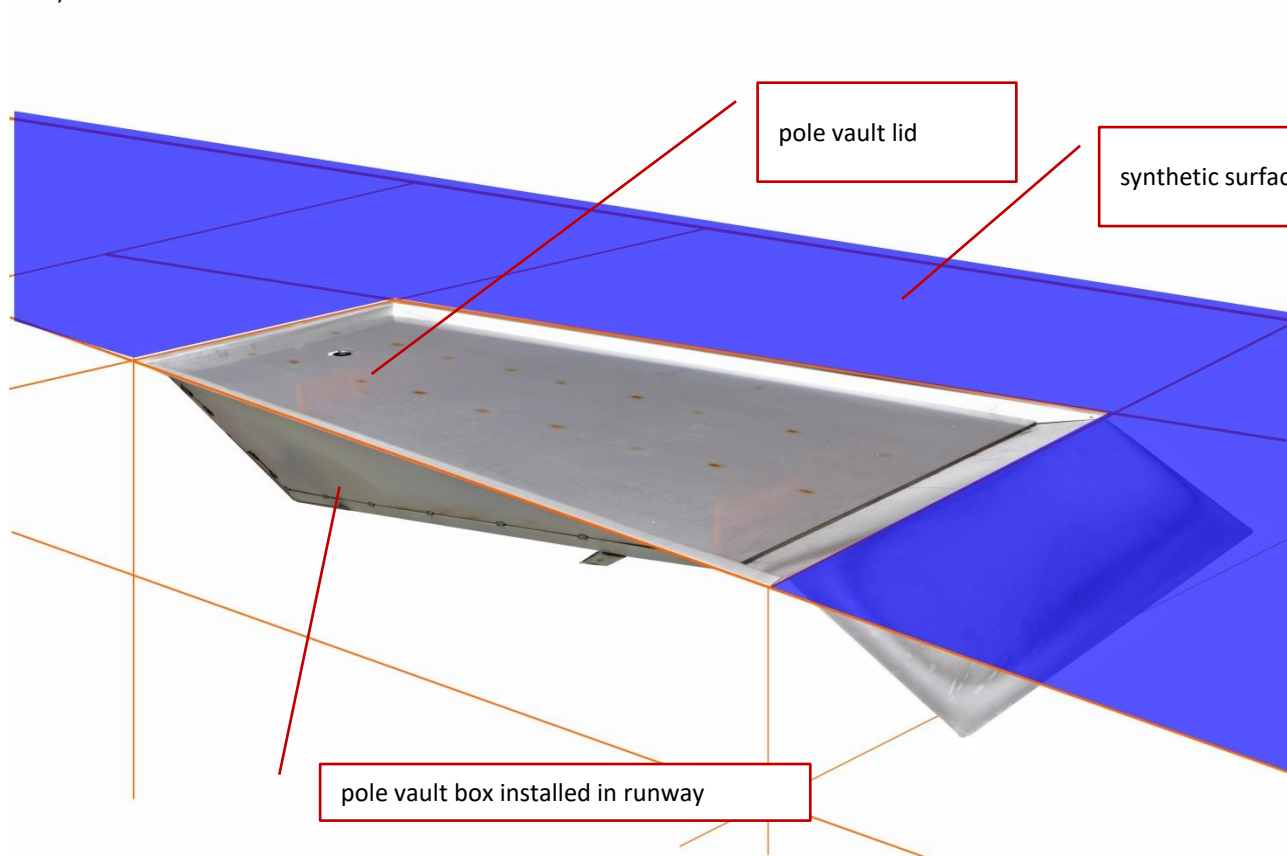
II. Technical specification

Code	PVLID-S
Type	flush mount, designed for synthetic track surface 12 mm thick
Construction	stainless steel, ribbed
Net weight [kg]	21,5

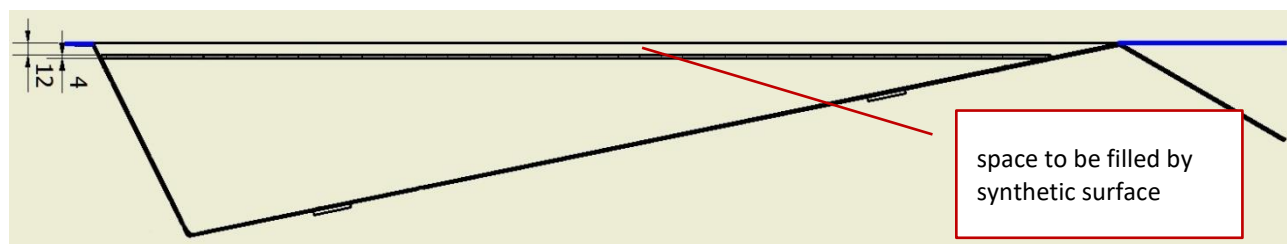


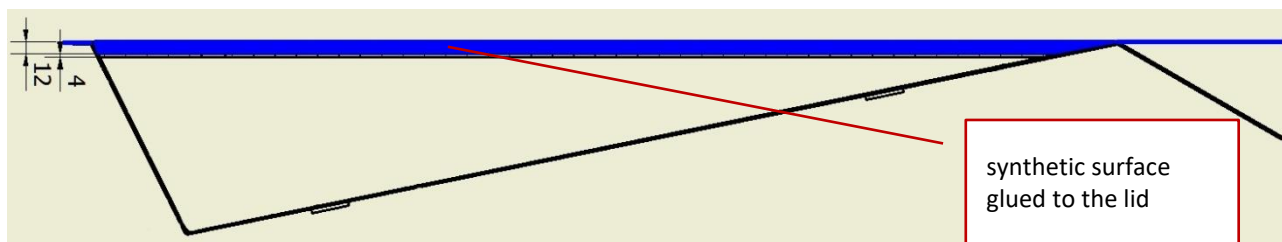
III. Installation

1. Place the lid in the box, make sure that the lid touches the shorter box edge (that one which is near the landing area).



2. A piece of synthetic surface is to fill the space between the lid upper surface and the top of the runway. The lid is designed for the synthetic surface which is approximately 12 mm thick.





If a synthetic surface piece is to be sprayed or poured on the lid, please place thick foil in the box first, then put the lid into the box and secure the wider edge with adhesive tape. Next install the surface and leave it to dry.



IV. Packing and transport

The product is packed in foil and transported on a pallet.

V. Maintenance

It is a maintenance free product.

PRODUCT SUPPORT: Pawel Ciechanowski p.ciechanowski@polanik.com

Even the best technical solutions cannot substitute for common sense. The usage of the product must take place under the supervision of sports facility technical staff. The producer shall not be liable for any incidents caused by the improper assembly or its misuse. The producer reserves the right to introduce without warning changes in product constructions and colours.

File: 2016-12-20 © 2016 Polanik